

# LIUV-310 UV-Vis Spectrophotometer



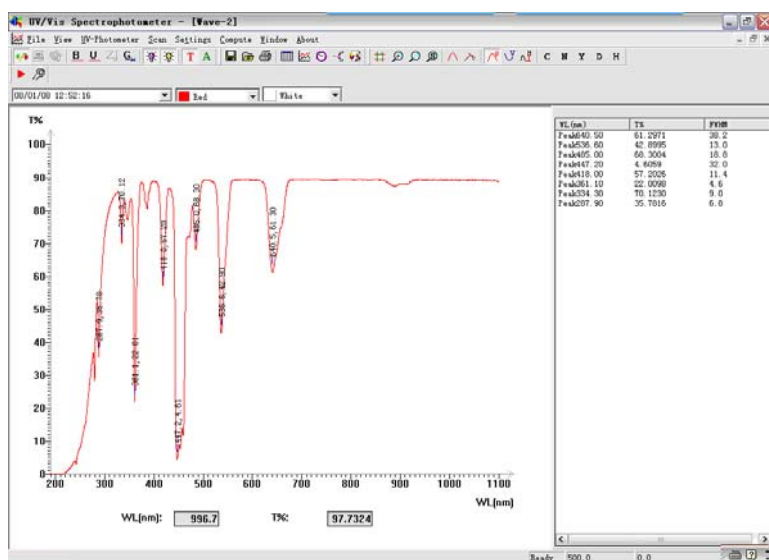
- *190 ~ 1100 nm*
- *Holographic Grating*
- *Automatic wavelength scanning*
- *Easy Operation*
- *Windows Software*
- *USB Interfacing*
- *Software Upgraded Easily*
- *Cost Effective*
- *CE and C-tick Compliance*

LIUV-310 is a dual-beam UV/Vis spectrophotometer with 1.8nm fixed bandwidth. This instrument can be operated by a PC via a USB cable. It can also be operated through the front panel display for basic functions. Fast scan speeds, accuracy and high resolution are its features. It is an indispensable analysis tool for various application fields such as chemistry, medicine, food and beverage, wine industry, chemical engineering and quality control.

<b>Optical Specifications</b>	
Monochromator	Dual-beam, single monochromator, Holographic grating 1200 lines/mm
Wavelength Range	190-1100nm
Wavelength Accuracy	±0.3nm
Wavelength Repeatability	±0.2nm
Wavelength Resolution	0.1nm
Photometric Range	Absorbance: -0.3-3.0A Transmittance: 0-200%T Concentration: 0-9999Conc
Photometric Accuracy	±0.3%T
Stray Light	≤0.1%T@220nm & 340nm
Bandwidth	1.8nm
Stability	< 0.002A/h@500nm
Baseline Flatness	±0.002A
Scanning Speed	Hi, Med, Low (Max. 1000nm/min)
Data Output	USB standard interface
Light Source	Tungsten Halogen/Deuterium Lamp
<b>Physical Characteristics</b>	
Standard Sample Holder	4-position Cell Holder installed
Printer Interface	Centronics Parallel, HP & EPSON Printers
Power Requirements	100-120 or 220-240 VAC, 50/60Hz
Dimensions	560(L) x 420(W) x 270(H) mm
Weight	20kg

## Features

- Single-beam and automatic wavelength scanning
- Measurement of specified wavelength T, A, C
- Scanning interval: 0.1, 0.5, 1, 2, 5 nm
- Dynamic feedback ratio recording photometric system, with baseline stability
- Quick scanning up to 1000 nm/min, Hi, Medium and Low scan speeds are available
- Recording baseline of full wavelength
- LCD screen, soft touch buttons, easy operation.
- USB interfaced and easy software upgrading
- Powerful software with quantitative analysis, DAN and Protein analysis
- Additional accessories for expanding the application



## Modes

1. Quantitative
2. Kinetics
3. Standard Curve
4. Sample scan
5. Multi Wavelength Test
6. DNA/Protein

## Parts Included

Item#	Description	Qty
1	Spectrophotometer	1
2	4-Position Cell Holder (10mm)	1
3	10mm Optical Square Cuvettes	4
4	10mm Quartz Cuvettes	2
5	USB Cable	1
6	Power Cord	1
7	Software CD	1
8	User Manual	1