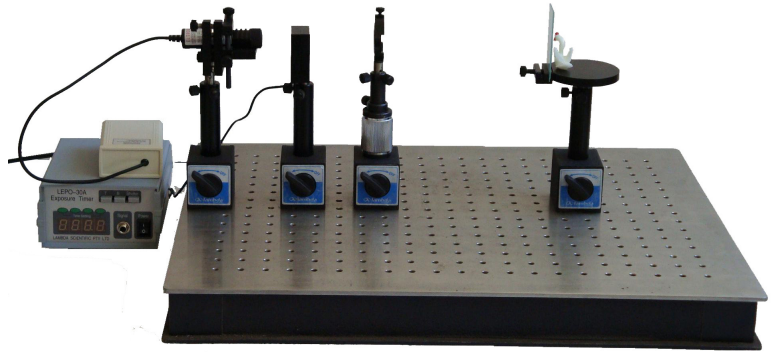


# LEOK-10 Holography Kit

- *Rainbow Holography*
- *White Light Reconstruction*
- *Ambient Light Operational*
- *Easy to Use*
- *35 mW Semiconductor Laser*
- *Photopolymer Plate*



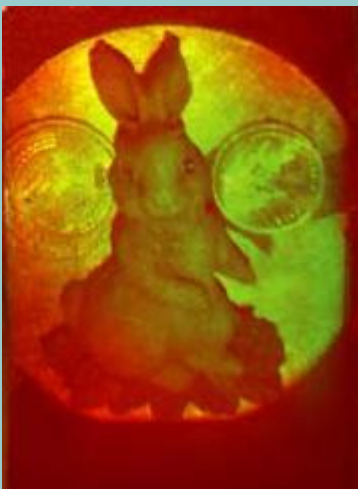
## Holography is easy!

Lambda's new holography kit is designed for basic education of holography in institutions of higher learning. While ideal for demonstrating in a classroom and physics lab, this kit is also suitable for amateurs who are fascinated with the startling real 3D effect that holograms produce.

This holography kit gives you all the essentials to make white light holograms with ease. Every user can record beautiful rainbow holograms *under ordinary light*.

## No dark room required

In this experiment, a red sensitive photopolymer (RSP) is used as the holographic recording medium. Unlike silver halide emulsion which is a type of conventional recording material, RSP is only sensitive to red light and can be controlled in common lighting. Significantly less effort is required than when working with silver halide as a recording plate. Hence, this requires no special dark room.

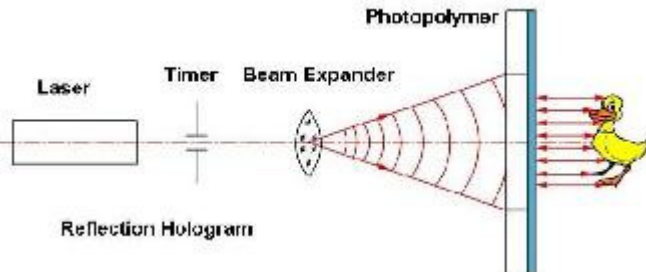


## Specifications

|                            |   |
|----------------------------|---|
| Semiconductor Laser        | 35mW@650 nm, bandwidth: 0.2nm             |
| Photopolymer Plate         | Resolution: 4000 l/mm, sheet: 90X240mm    |
| Exposure Timer and Shutter | 0.1-999.9 s, LED, manual & remote control |
| Optical Breadboard         | 600X600X60mm                              |

## Key Features

The schematic of the hologram recording



This cost effective kit provides you with the equipment required to make white light holograms with easy operation. A detailed practical procedure manual is supplied with this kit, allowing holography now accessible to everyone



A semiconductor diode laser, 35mW@650nm, can greatly reduce exposure time, which decreases the influence of vibration on holographic recording.



The digital electronic timer with a shutter employs IC technology in the timing electronics which ensures highly stable, accurate and reliable results.

## Parts Included

| Description                    | Part No./Specs           | Qty    |
|--------------------------------|--------------------------|--------|
| Semiconductor Diode Laser      | 35mW@650nm               | 1      |
| Exposure Timer and Shutter     | 0-999.9s, accuracy: 0.1s | 2      |
| Magnetic Base                  | LEPO-4                   | 4      |
| Z-Adjustable Magnetic Base     | LEPO-3                   | 1      |
| Two-axis Adjustable Holder     | LEPO-8                   | 1      |
| Lens Holder                    | LEPO-9                   | 1      |
| Aperture Adjustable Bar Clamp  | LEPO-20                  | 1      |
| Loading Table and Plate Holder |                          | 1      |
| Plane Mirror                   | φ36X4 mm                 | 1      |
| Beam Expander                  | f = 4.5mm                | 1      |
| Small Object                   |                          | 1      |
| Photopolymer Plate             | 90X240 mm/sheet          | 10/box |
| Optical Breadboard (optional)  | 600X600X60mm             | 1      |
| User's Manual                  |                          | 1      |